



Suite 507, 700 West Pender Street,  
Vancouver, BC V6C 1G8  
Tel: +1.778.379.1433  
Fax: +1.778.379.1434

NR 2020-18

September 30, 2020

TSX-V: BAU Frankfurt: 5WP

## **BLUE STAR GOLD DRILLS 13.42 G/T OVER 7 METRES AT ULU GOLD**

## **PROPERTY AND 13.87 G/T OVER 3 METRES AT HOOD RIVER PROPERTY**

Vancouver, BC / September 30, 2020/ Blue Star Gold Corp. (“Blue Star” or the “Company”) announces the first assay results from the 7,624 metre diamond drilling program at its Ulu and Hood River properties. The properties are located approximately 525 km NNE of Yellowknife, NT in the Kitikmeot region of western Nunavut. Kugluktuk is approximately 210 km to the NW.

### **Highlights:**

- 7,624 metres drilled in thirty-eight diamond drill holes
  - Ten holes were drilled at Ulu and Gnu deposits to expand known resources and confirm the geologic model
  - Twenty-eight holes were drilled to test high priority exploration targets on both the Ulu and Hood River properties, including fourteen in the North Fold Nose (NFN) zone
  - Assay results for 3 Flood zone and twelve NFN zone holes returned thus far
- Highlight gold assay results for the Flood zone:
  - BS2020ULU-002, (9 – 16m): **7 metres (m) of 13.42 g/t gold (Au)**
    - Including (12 – 13m): 1 m @ 31.5 g/t Au; and including (13 – 14m): 1 m @ 17.95 g/t Au; and including (14 – 15m): 1 m @ 23 g/t Au; and including (15 – 16m): 1 m @ 13.65 g/t Au
  - BS2020ULU-003, (13 – 22m): **9 m of 8.67 g/t Au**
    - Including (19 – 20m): 1 m @ 11.05 g/t Au; and including (20 – 21m): 1 m @ 18.4 g/t Au
  - BS2020ULU-003, (110 – 118m): **8 m of 8.26 g/t Au**
    - Including (112 – 113m): 1 m @ 17.95 g/t Au; and including (113 – 114m): 1 m @ 12.45 g/t Au
  - BS2020ULU-003, (154 – 165m): **11 m of 4.24 g/t Au**
    - Including (160 – 164m): 4 m @ 8.16 g/t Au

- Highlight gold assay results for the NFN zone:
  - HR20-013, (109 – 111m): **2 metres (m) of 13.18 g/t gold (Au)**
    - Including (109 – 109.5m): 0.5 m @ 50.8 g/t Au
  - HR20-014, (118 – 122m): **4 m @ 7.59 g/t Au**
  - HR20-016, (141 – 145m): **4 m @ 6.09 g/t Au**
    - Including (144 – 145m): 1 m @ 18.9 g/t Au
  - HR20-017, (164 – 167m): **3 m @ 13.87 g/t Au**
    - Including (164 – 165m): 1 m @ 16.35 g/t Au; and including (165 – 166m): 18.3 g/t Au
  - HR20-020, (140 – 144m): **4 m @ 5.52 g/t Au**
    - Including (142 – 143m): 1 m @ 6.79 g/t Au

Grant Ewing, the Company's CEO commented, "Our current 7,624 metre drill program represents the most significant exploration program conducted at the Ulu and Hood River projects in over a decade, and the first drilling campaign completed on the Ulu project since its acquisition by Blue Star. The results reported today indicate the strong potential to increase the scale of our high-grade gold resources and shows the excellent potential for new discoveries on our extensive landholdings. Thirty-eight holes have been drilled during the current program, which will lead to a very active news flow period as we report the balance of the assay results over the coming days."

### **Ulu and Hood River Properties**

The Ulu lease and the contiguous Hood River property together encompass approximately 9,000 ha of highly prospective exploration ground. The Ulu lease hosts the advanced stage Flood and Gnu gold deposits, where a significant high-grade gold resource has been outlined. A series of gold occurrences occur on-strike and north of the Flood gold zone and are thought to be related to the ~5 km long Ulu regional fold that extends from the Ulu lease on to the north Hood River property culminating at the NFN zone. This structure, called the Robb trend, extends from the Flood and Gnu gold zones along the Ulu fold to the north and hosts at least five gold zones in addition to the Flood and Gnu zones (NFN, INT, Bizen, Apex and Contact zones) (see Figure 1, page 5). The Hood River property is contiguous to the Ulu lease to the north, east and south, and hosts over twenty known gold showings (see Figure 2, page 6). Many of the high-priority target areas outside of the Flood zone have only been tested with relatively shallow drilling, and the potential throughout the properties to host new discoveries at depth is considered high. Refer to the link to view a 3-D model of the Flood and Gnu deposits (<https://bluestargold.ca/projects/ulu/flood-gnu-resource-3d-model/>).

### **Next Steps, Upcoming Milestones**

- The Company is entering a period of very active news flow as assay results from the balance of the drill holes will be reported over the coming days

- Plans underway to update the Flood and Gnu zone resource estimates following assessment of all the Summer/Fall 2020 drilling program data. The Flood and Gnu zones have excellent resource expansion potential and it is anticipated that the first estimate for the NFN zone will also be completed
- Planning for an aggressive 2021 exploration program, ~12,000 – 15,000 metres of diamond drilling scheduled to further expand the resource base and test numerous high priority drill targets throughout the Ulu and Hood River properties

### 2020 Exploration Program Summary

The program entailed 7,624 metres of diamond drilling in thirty-eight diamond drill holes on the Ulu and Hood River properties. The Flood zone holes were drilled to; provide additional geologic information and confirm certain aspects of the geologic model of the deposit, to improve drill hole density and allow for possible upgrading of the resource category, and to expand the resource base. The Contact zone holes were drilled to test a high priority target zone where no resource estimate has been established yet.

Several high priority exploration targets were tested on north Hood River. No resource estimates have been completed at these zones yet, but it is anticipated that enough drill data will exist for the first resource estimate on the NFN zone following the current program.

Table 1: Ulu Project Diamond Drill Hole Summary:

Hole Name	Project Name	Target Name	Azimuth	Dip	Total Metres Drilled
BS2020ULU-001	ULU PROJECT	FLOOD	17	-65	400
BS2020ULU-002	ULU PROJECT	FLOOD	270	-50	17
BS2020ULU-003	ULU PROJECT	FLOOD	270	-55	350
BS2020ULU-004	ULU PROJECT	FLOOD	205	-62	641
BS2020ULU-005	ULU PROJECT	FLOOD	230	-57	536
BS2020ULU-006	ULU PROJECT	FLOOD	216	-61	542
BS2020ULU-007	ULU PROJECT	GNU	27	-50	170
BS2020ULU-008	ULU PROJECT	GNU	27	-65	101
BS2020ULU-009	ULU PROJECT	GNU	27	-45	130.5
BS2020ULU-010	ULU PROJECT	GNU	27	-60	142
BS2020ULU-011	ULU PROJECT	CONTACT	234	-55	284
BS2020ULU-012	ULU PROJECT	CONTACT	275	-50	383
<b>Total</b>					<b>3696.5 m</b>

**Table 2: Hood River Project Diamond Drill Hole Summary:**

Hole Name	Project Name	Target Name	Azimuth	Dip	Total Metres Drilled
HR20-013	HOOD RIVER PROJECT	NFN	40	-55	126
HR20-014	HOOD RIVER PROJECT	NFN	40	-73	151
HR20-015	HOOD RIVER PROJECT	NFN	240	-79	181
HR20-016	HOOD RIVER PROJECT	NFN	240	-58	210.5
HR20-017	HOOD RIVER PROJECT	NFN	240	-45	215
HR20-018	HOOD RIVER PROJECT	NFN	67	-86	211
HR20-019	HOOD RIVER PROJECT	NFN	67	-73	164
HR20-020	HOOD RIVER PROJECT	NFN	67	-55	154
HR20-021	HOOD RIVER PROJECT	NFN	67	-76	148
HR20-022	HOOD RIVER PROJECT	NFN	67	-88	163
HR20-023	HOOD RIVER PROJECT	NFN	67	-85	109
HR20-024	HOOD RIVER PROJECT	NFN	40	-60	121
HR20-025	HOOD RIVER PROJECT	NFN	246	-70	101
HR20-026	HOOD RIVER PROJECT	NFN	245	-48	133
HR20-027	HOOD RIVER PROJECT	INT	356	-45	100
HR20-028	HOOD RIVER PROJECT	INT	356	-70	145
HR20-029	HOOD RIVER PROJECT	BIZEN	90	-45	314
HR20-030	HOOD RIVER PROJECT	APEX	290	-45	300.7
HR20-031	HOOD RIVER PROJECT	APEX	180	-45	161
HR20-032	HOOD RIVER PROJECT	APEX	180	-75	111.5
HR20-033	HOOD RIVER PROJECT	CROWN	45	-45	149
HR20-034	HOOD RIVER PROJECT	CROWN	45	-85	89
HR20-035	HOOD RIVER PROJECT	CROWN	290	-55	152
HR20-036	HOOD RIVER PROJECT	SOUTH PENTHOUSE	15	-60	107
HR20-037	HOOD RIVER PROJECT	SOUTH PENTHOUSE	15	-85	46
HR20-038	HOOD RIVER PROJECT	SOUTH PENTHOUSE	1	-70	62
<b>Total</b>					<b>3924.7 m</b>

Figure 1. Ulu Property, Robb Trend:

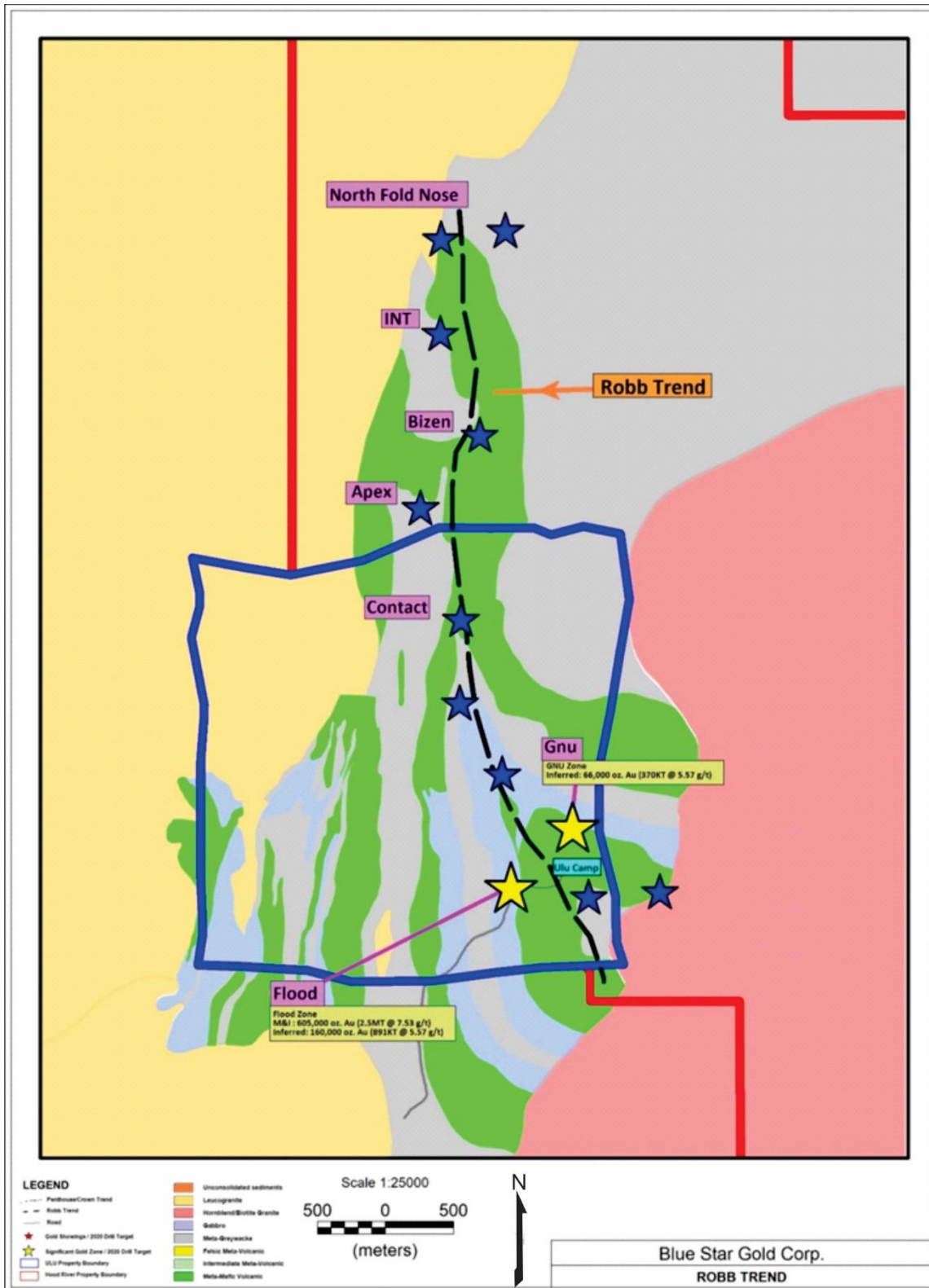
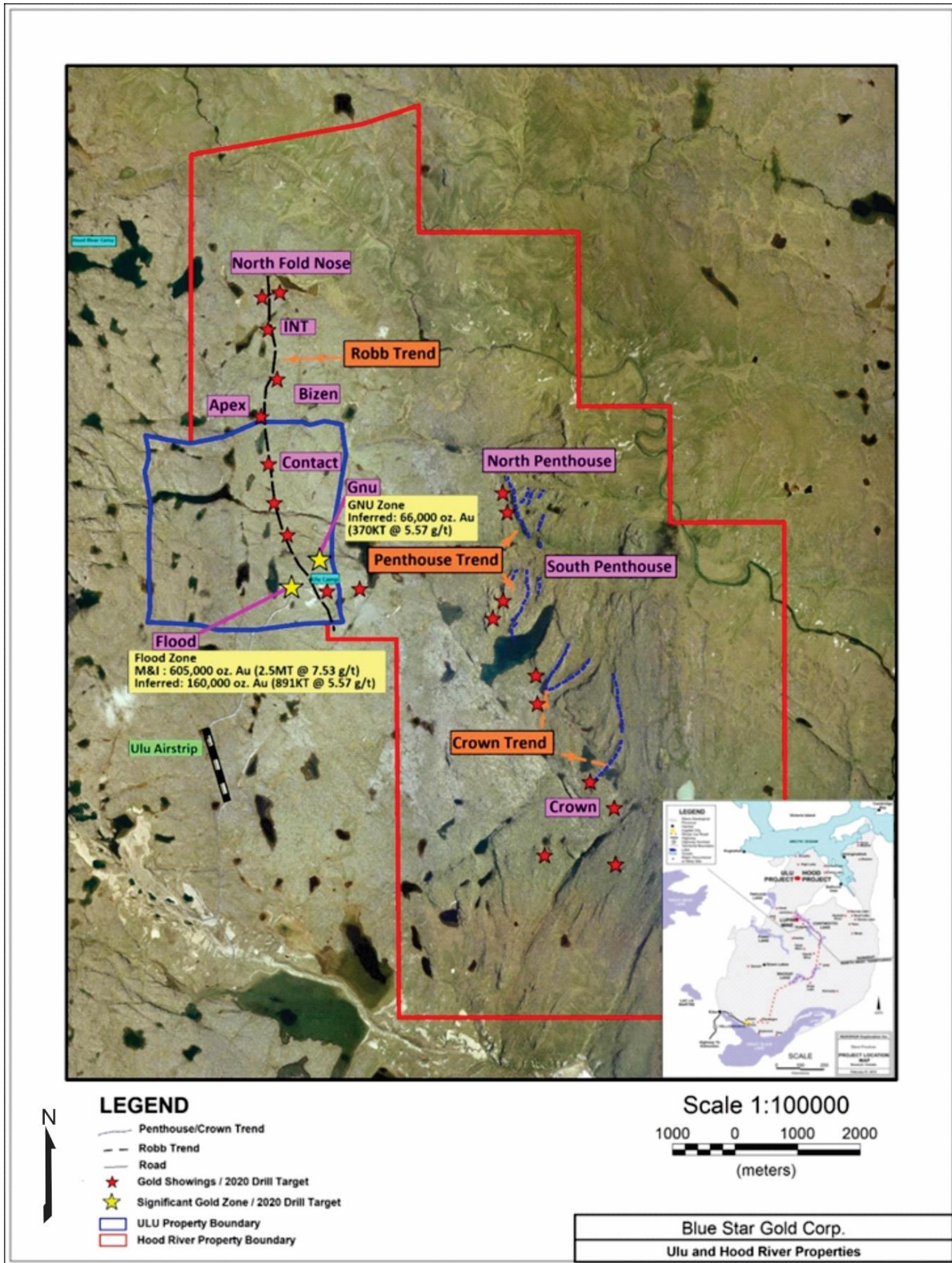


Figure 2. Ulu and Hood River Properties:



Assay results for 3 holes returned from the Flood zone:

Hole ID	Includes/And	From (m)	To (m)	Core Length (m)	Au (g/t)	Ag (g/t)
BS2020ULU-001		78	79	1	2.95	12.4
		243	245	2	4.65	0.2
	INCLUDES	243	244.1	1.1	7.85	0.2
		295	299	4	1.235	0.2
BS2020ULU-002		2	7	5	0.974	0.1
		3	4	1	1.26	0.2
		5	6	1	1.59	0.1
		9	16	7	13.42	0.3
	INCLUDES	12	13	1	31.5	0.7
	AND	13	14	1	17.95	0.4
	AND	14	15	1	23	0.5
	AND	15	16	1	13.65	0.3
BS2020ULU-003		2	5	3	1.1	0.1
		12	13	1	1.45	0.1
		13	22	9	8.67	0.4
	INCLUDES	19	20	1	11.05	0.3
	INCLUDES	20	21	1	18.4	0.7
		25	28	3	5.53	0.3
		32	36	4	7.84	0.3
	INCLUDES	32	33	1	15.4	0.4
		72	73	1	6.08	0.5
		74	79	5	4.47	0.3
	INCLUDES	74	75	1	14.5	0.6
		93	94	1	1.18	0.2
		97	106	9	5.85	0.5
	INCLUDES	101	104	3	12.42	0.9
		110	118	8	8.26	0.5
	INCLUDES	112	113	1	17.95	2.1
	AND	113	114	1	12.45	0.2
		154	165	11	4.24	0.4
	INCLUDES	160	164	4	8.16	0.7
		175	176	1	1.06	0.3
	205	206	1	1.69	0.3	
	250	251	1	3.6	0.2	
	308	309	1	0.42	0.1	

Assay results for twelve holes returned from the NFN zone:

Hole ID	Includes/And	From (m)	To (m)	Core Length (m)	Au (g/t)	Ag (g/t)
HR20-013		109	111	2	13.18	6.7
	INCLUDES	109	109.5	0.5	50.8	24.4
HR20-014		118	122	4	7.59	3.9
HR20-015		132	134	2	1.22	0.6
HR20-016		141	145	4	6.09	8.1
	INCLUDES	144	145	1	18.9	3.1
HR20-017		164	167	3	13.87	1.6
	INCLUDES	164	165	1	16.35	1.3
	AND	165	166	1	18.3	2.2
HR20-018		127	129	2	9.1	0.3
	INCLUDES	128	129	1	17.9	0.5
HR20-019		150	151	1	0.56	0.4
HR20-020		140	144	4	5.52	1.5
	INCLUDES	141	142	1	3.67	1.0
	AND	142	143	1	6.79	1.5
HR20-022		140	143	3	3.65	0.6
		139	141	2	1.68	0.6
HR20-023		86.7	89.3	2.6	1.87	0.9
HR20-024		90	92	2	2.42	1.5
HR20-025		86	88	2	2	0.3

\*Note that intervals listed above are core length, and not true width

At the NFN zone, high grade gold mineralization occurs within a folded and sheared quartz-flooded zone at the contact between meta-volcanic and metasedimentary rocks. The mineralized zone extends for more than 50 metres along strike, has an approximate average thickness of 2.5 metres and has been traced for over 130 metres down dip. This structure remains open along strike and to depth. Metallurgical test work on the NFN mineralization compares favourably with the Flood zone, which has shown that gold is recoverable in amounts greater than 90% recovery with simple and conventional processing methodology.



## **QA/QC Program for the 2020 Exploration Work**

All drill core was logged and sampled in secure core processing structures located at the Ulu or Hood River camps. Drill core samples were collected by either cutting the core in half using diamond saws or by splitting the core half using hydraulic core splitters. In addition to the QA/QC protocols of ALS Global, the Company maintains its own program of inserting Standard Reference material in the form of standards and blanks into the sampling stream, prior to being shipped to ALS's preparation facility in Yellowknife.

## **History and Geology of the Ulu and Hood River Gold Properties**

The properties are located approximately 525 km NNE of Yellowknife, NT in the Kitikmeot region of western Nunavut. Kugluktuk is approximately 210 km to the NW.

The Ulu property consists of a renewable 21-year mining lease and covers an area of approximately 947 ha. The lease hosts an advanced gold project that between 1989 and 2012 saw significant exploration and development by BHP Minerals and Echo Bay Mines, among others. The past work includes approximately 1.7 km of underground development and approximately 405 diamond drill holes that produced 97,820 m of core (Ulu and Hood River). The Flood Zone contains the bulk of the Ulu gold resource and is open on-strike and at depth. Overall resources of 2.50 million tonnes grading 7.53 g/t Au for 605,000 gold ounces (measured & indicated category) and 1.26 million tonnes grading 5.57 g/t Au for 226,000 gold ounces (inferred category) have been estimated for the Flood and Gnu zones (refer to "Technical Report on the Ulu Gold Property, Nunavut, Canada" dated July 10, 2015). The deepest intersection of mineable width at the Flood zone is 14.9 g/t Au over 7.7 m in BHP's drill hole 90VD-75 at 610 m below surface. Metallurgical testing on the Flood zone gold mineralization has shown that gold is recoverable in amounts greater than 90% by gravity, flotation and cyanidation.

The Hood River property is contiguous to the Ulu lease to the north, east and south. The property is held through a renewable, 20-year Mineral Exploration Agreement with Nunavut Tunngavik Incorporated. The highly prospective property encompasses 8,015 ha. At least 22 known gold showings have been identified on the property. The exploration target for the property is shear-hosted gold mineralization similar to the Flood zone on the adjacent Ulu lease.

A series of gold occurrences occur on-strike and north of the Flood gold zone and are thought to be related to the ~5 km long Ulu regional fold that extends from the Ulu lease onto the north Hood River property culminating at the NFN zone. This structure, called the Robb trend, extends from the Flood and Gnu gold zones along the Ulu fold to the north and hosts at least five gold zones in addition to the Flood and Gnu zones (NFN, INT, Bizen, Apex and Contact zones).

Gossanous auriferous rocks hosted within mafic volcanic units at or close to the contact with meta-greywacke rocks occur along the Robb trend. The gold mineralization is commonly enveloped by an alteration halo of

biotite-actinolite-quartz. The mineralized zones are believed to be the result of brittle-ductile failure caused by regional stresses during different deformation stages. Along sedimentary-volcanic contacts, regional folding causing shearing, due to lithological competency contrasts, resulted in minor dilatancy. These dilatational zones were in-filled with the gold-arsenic-rich hydrothermal fluids. Mineralization shows pinch and swell style.

Several high-grade gold occurrences also occur on the east Hood River property, including the Crown and Penthouse zones, where gold trends with similarities to the Robb trend may exist. In addition, many unnamed gold occurrences exist on the two properties, where further prospecting is required to advance the showings to target zones. The large number of high-grade gold showings that occur throughout the properties provide for excellent resource expansion potential at multiple targets.

Supplementing the high-grade gold resources, the Ulu project includes a substantial inventory of capital equipment, a Weatherhaven camp with shop and a 1,200 m long airstrip. The site of the future deep-water port at Grays Bay is 100 km to the north of the properties, and the proposed route corridor for the all-weather Grays Bay road passes in proximity to the Ulu and Hood River projects.

#### Ulu Resource Estimate

Classification	Gold <i>Cut-off (g/t)</i>	Tonnage <i>Tonnes</i>	Gold Grade <i>g/t</i>	Gold Contained <i>Oz</i>
<b>Flood Zone</b>				
Measured	> 4.0	1,000,000	8.48	272,000
Indicated	> 4.0	1,500,000	6.90	333,000
Measured & Indicated	> 4.0	2,500,000	7.53	605,000
Inferred	> 4.0	891,000	5.57	160,000
<b>Gnu Zone</b>				
Inferred	> 4.0	370,000	5.57	66,000
<b>Total - Flood and Gnu Zones</b>				
Measured & Indicated	> 4.0	2,500,000	7.53	605,000
Inferred	> 4.0	1,261,000	5.57	226,000

#### Notes to the Resource Estimate

1. Mineral resources which are not mineral reserves do not have demonstrated economic viability. The estimate of mineral resources may be materially affected by environmental, permitting, legal, title, taxation, socio-political, marketing, or other relevant issues.

2. Confidence in the estimate of Inferred Mineral Resources is insufficient to allow the meaningful application of technical and economic parameters. There is no guarantee that all or any part of a mineral resource can or will be converted into a mineral reserve.
3. The mineral resources in this estimate were calculated using the Canadian Institute of Mining, Metallurgy and Petroleum ("CIM"), CIM Standards on Mineral Resources and Reserves, Definitions and Guidelines prepared by the CIM Standing Committee on Reserve Definitions and adopted by CIM Council.
4. The reliability and accuracy of downhole surveys in 188 of 313 drill holes in the resource area are in question due to their lack of proper measurements. For these holes, the QPs have imposed an average demonstrated predictability of drill hole deflection that are present in holes on the property that do have proper downhole measurements. In the opinion of the QPs, this is a more reasonable assumption than assuming straight line drill holes.
5. The following parameters were used to derive the cut-off: CA\$100/t mining costs, CA\$25/t processing costs and CA\$10/t G&A; transporting gravity and flotation concentrate to the Lupin to produce dore with a CA\$25/t transport cost; CA\$1500/oz gold price; process recoveries of 90%, smelter payables of Au at 96% and refining charges of Au CA\$12/oz.
6. The Company filed its technical report, titled "Technical Report on the Ulu Gold Property, Nunavut, Canada" dated July 10, 2015 from which the table of resources was taken. Gary Giroux, P.Eng. of Giroux Consulting Inc., Bob Singh, P.Geo. of North Face Software Ltd. and Paul Cowley, P.Geo. of Buena Tierra Developments Ltd., are Qualified Persons as defined in NI 43-101 and were responsible for the preparation of the Technical Report.
7. An updated resource estimate is planned, as there are a number of new variables that apply, including; gold price, exchange rate, fuel costs, and the fact that the Lupin minesite would no longer be the processing site.

### **Qualified Person**

Warren Robb P.Geo. a Qualified Person under National Instrument 43-101 ("NI 43-101"), has reviewed and approved the geological information contained in this news release.

### **About Blue Star Gold Corp.**

Blue Star is a Vancouver-based gold and silver company focused on exploration and development within Nunavut, Canada. The Company owns the **Ulu Gold Property** lease, an advanced gold and silver project, and the highly prospective **Hood River gold concessions** that are contiguous with the Ulu mining lease. The combined properties total approximately 9,000 ha of prospective mineral claims within which the Company has a significant high-grade gold resource on the Ulu lease, and numerous high-grade gold occurrences and priority targets throughout the Ulu and Hood River properties.

Blue Star has 164.8 million shares outstanding and is listed on the TSX Venture Exchange under the symbol: BAU and on the Frankfurt Exchange under the symbol: 5WP. For information on the Company and its projects, please visit our website: [www.bluestargold.ca](http://www.bluestargold.ca).

**For further information, please contact:**

Grant Ewing, P. Geo., CEO

Telephone: +1 778-379-1433

Email: [info@bluestargold.ca](mailto:info@bluestargold.ca)

*Neither the TSX Venture Exchange nor its Regulation Services Provider (as that term is defined in the Policies of the TSX-Venture Exchange) accepts responsibility for the adequacy or accuracy of this Release.*

**CAUTIONARY NOTE REGARDING FORWARD-LOOKING STATEMENTS AND INFORMATION**

*This press release contains "forward-looking statements" within the meaning of applicable securities laws. Forward-looking statements can be identified by words such as: "anticipate," "intend," "plan," "goal," "seek," "believe," "project," "estimate," "expect," "strategy," "future," "likely," "may," "should," "will" and similar references to future periods. Examples of forward-looking statements include, among others, statements we make regarding prospective income and revenues, anticipated levels of capital expenditures for fiscal year, expectations of the effect on our financial condition of claims, litigation, environmental costs, contingent liabilities and governmental and regulatory investigations and proceedings, and estimates of mineral resources and reserves on our properties.*

*Forward-looking statements are neither historical facts nor assurances of future performance. Instead, they are based only on our current beliefs, expectations and assumptions regarding the future of our business, future plans and strategies, projections, anticipated events and trends, the economy and other future conditions. Because forward-looking statements relate to the future, they are subject to inherent uncertainties, risks and changes in circumstances that are difficult to predict and many of which are outside of our control. Our actual results and financial condition may differ materially from those indicated in the forward-looking statements. Therefore, you should not rely on any of these forward-looking statements. Important factors that could cause our actual results and financial condition to differ materially from those indicated in the forward-looking statements include, among others, the following: economic and financial conditions, including volatility in interest and exchange rates, commodity and equity prices and the value of financial assets, strategic actions, including acquisitions and dispositions and our success in integrating acquired businesses/our success in integrating the Ulu Gold Property into our operations, developments and changes in laws and regulations, including increased regulation of the mining industry through legislative action and revised rules and standards applied by the regulatory bodies in Nunavut, changes in the price of fuel and other key materials and disruptions in supply chains for these materials, closures or slowdowns and changes in labour costs and labour difficulties, including stoppages affecting either our operations or our suppliers' abilities to deliver goods and services to us, as well as natural events such as severe weather, fires, floods and earthquakes or man-made or other disruptions of our equipment, and inaccuracies in estimates of mineral resources and/or reserves on our mineral properties.*